

# SNA-2575

Scalar Network Analyzer 400 kHz ÷ 2.5 GHz (100 kHz ÷ 2.6 GHz)

## QUICK INSTALLATION GUIDE



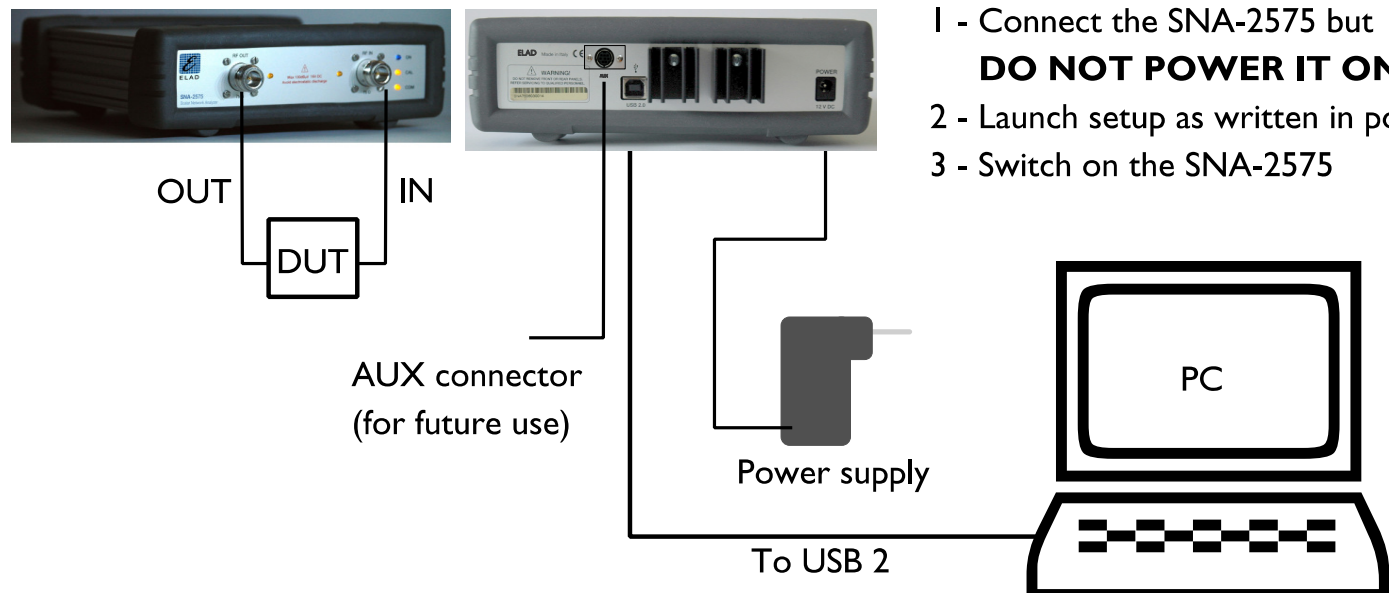
Dear Customer,

Thank you very much for choosing an ELAD's product. For a correct installation we recommend you to read carefully this guide. For more detailed information's regarding use and maintenance please refer to the Operating Manual that you will find in the enclosed CD Rom.

### 1 Packing List

- Nr. 1 SNA-2575 Network Analyzer 400 kHz ÷ 2.5 GHz
- Nr. 1 Installation guide
- Nr. 1 Power Supply 230V AC / 12V DC
- Nr. 1 cable MH USB 2.0 A - B (L = 1.8 mt.)
- Nr. 1 short bridge 75 Ohm
- Nr. 1 short connector
- Nr. 1 CD ROM with software, drivers e user's guide
- Nr. 1 warranty certificate

### 2 Set Up



- 1 - Connect the SNA-2575 but **DO NOT POWER IT ON!**
- 2 - Launch setup as written in point 3
- 3 - Switch on the SNA-2575

# 3 Software installation

The installation process requires two steps:

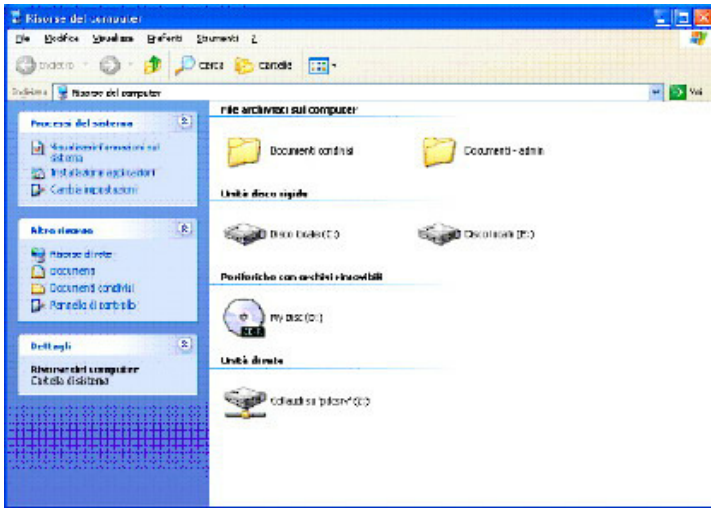
- A) SNA-2575 Software Installation
- B) USB Driver Installation

## A) SNA-2575 Software Installation

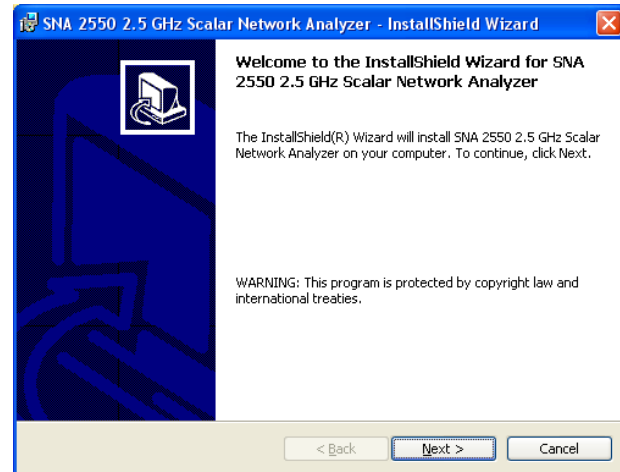
During the installation process please be sure the SNA-2575 is in power off mode or not connected to the USB port.

On the PC Desktop open the window <My Computer>

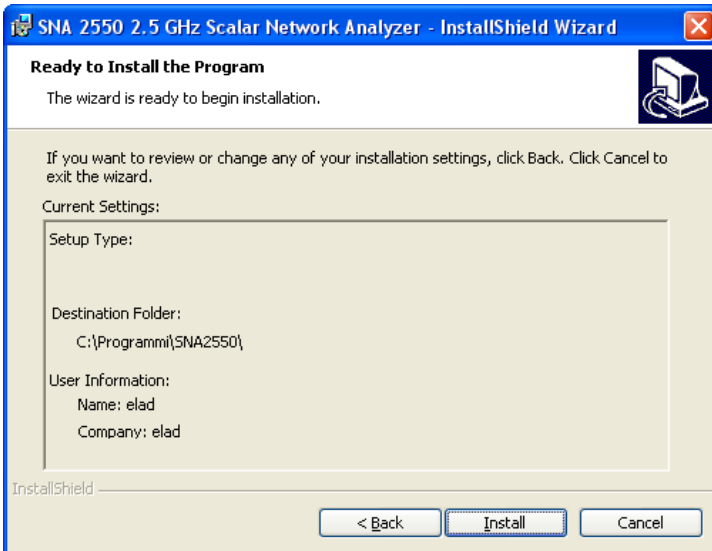
Click on CD-R to show the content of the installation disk and click on <SNA2575setup.exe> to start the installation.



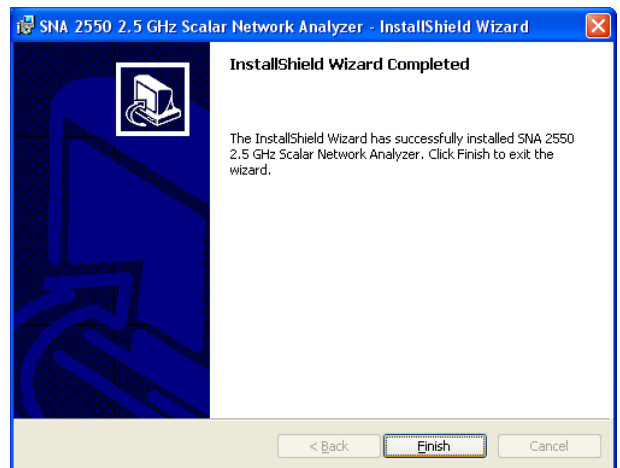
2 The following InstallShield Wizard will be displayed. Go ahead with Next>.



3 After having accepted the license agreement terms and conditions proceed with < Next> until the following wizard will be displayed. Then go ahead with <Install>.



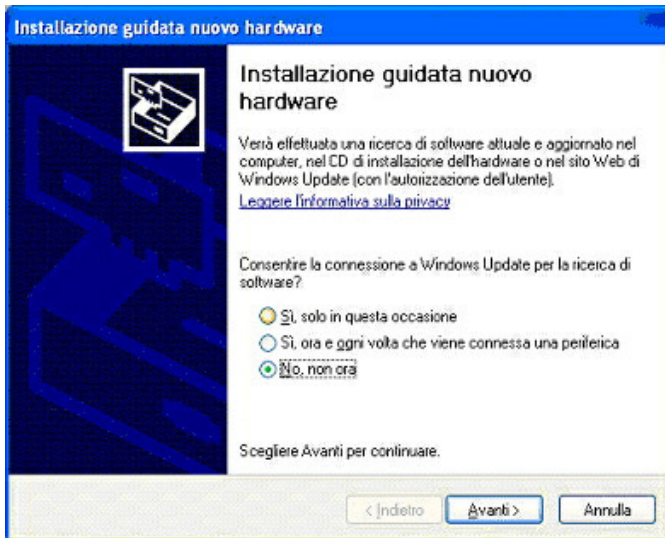
4 From this point the installation proceeds automatically until the following wizard will be displayed. Click <Finish>. Now the installation of the SNA-2575 software is finished. Entering the Program Files directory, the SNA-2575 icon will be displayed. Right clicking the SNA-2575 icon with your mouse you can create a shortcut to the desktop.



## B) USB Driver Installation

After having successfully installed the SNA-2575 software the USB driver must be installed.

- 5 To install the USB driver connect the USB cable from the SNA-2575 front-end to the PC and switch on the SNA-2575 front-end. From this point on the <New hardware installation> wizard will be displayed. In the <New hardware installation> wizard choose the <No, not now> option and go ahead with install.

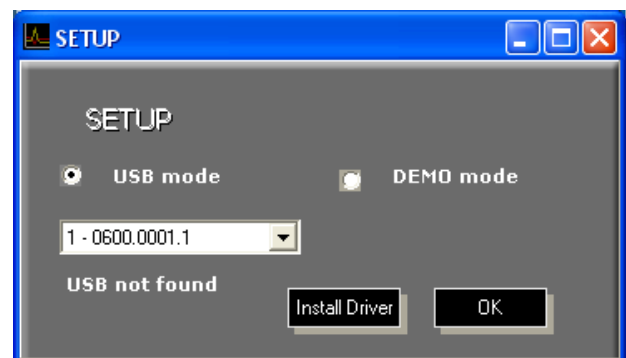
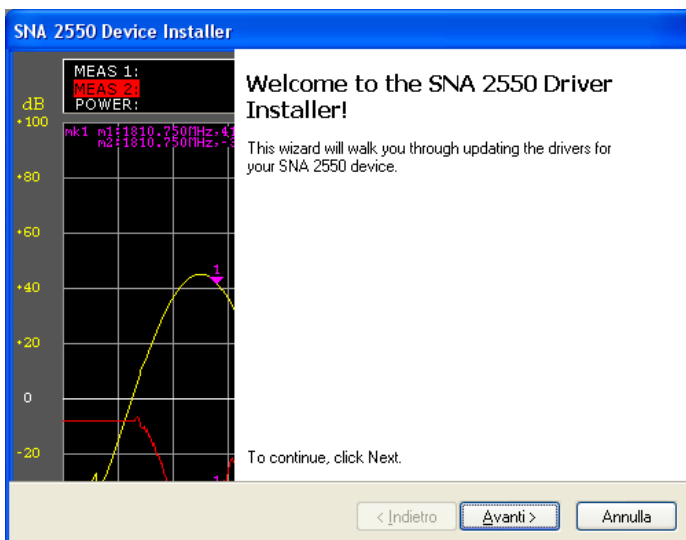


- 6 Launch the program with a double click on the Icon (see point 4): the following window will be displayed. Click "Install Driver" to install the USB driver automatically for the selected device.

### Note for Vista™ users

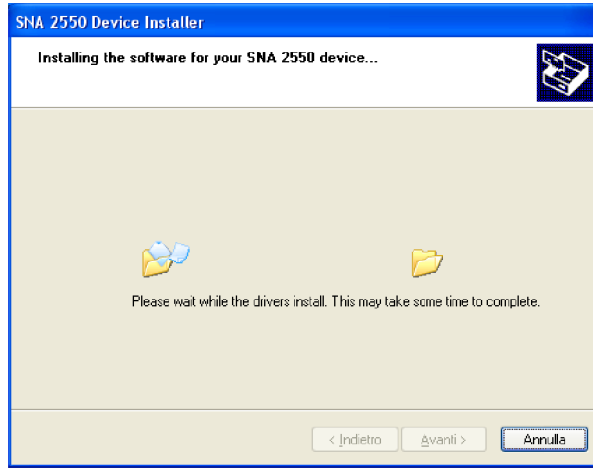
In case of "Operating Failure" error, launch the executable file directly from the installation folder:  
C:\Programs\SNA2550\DRIVER\DPInst.exe

- 7 On the following window go ahead to install the SNA-2575 driver..



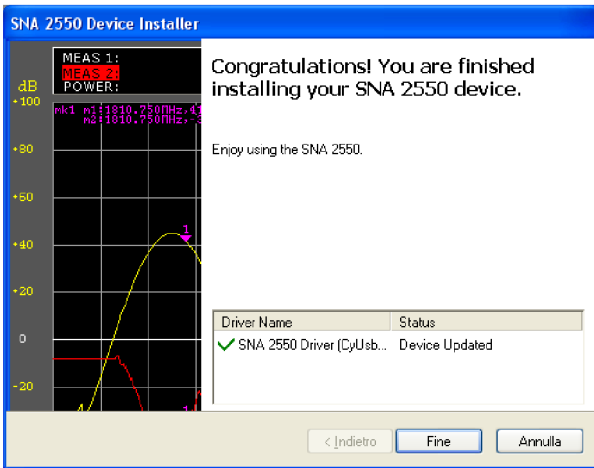
# 8

Please wait while the drivers install.



# 9

Click <Finish> to complete the driver installation.



# 10

Now you will be prompted to the window shown on point 6. Select "USB MODE" and click OK to launch the main window of the SNA-2575 software.

